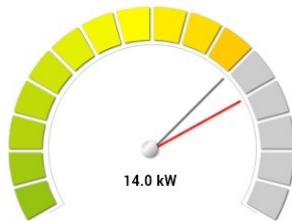


Power Monitoring System

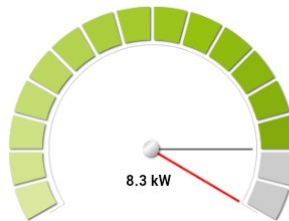
Building
ENERGY MONITOR

BONLEC **powersavvy**
CONTROLS BE SMART WITH POWER

Current Use

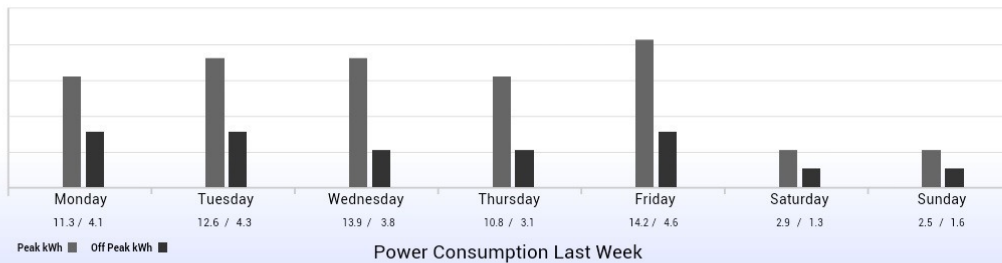


Solar Energy



Power Summary

	Today	This Week
Peak Power	12.7 kWh	78.5 kWh
Off Peak Power	3.2 kWh	18.3 kWh
Power Consumption	15.9 kWh	96.8 kWh
Power Generation	73.6 kWh	685.4 kWh
CO2 Reduction	53.7 kg	500.3 kg



The Bonlec Power Monitoring and display system utilizes market leading BMS controllers to offer a monitoring and control solution that can be tailored to suit any sized installation. The entry-level system shown above was developed in response to the demand generated by the Ergon Powersavvy initiative and includes:

- ✓ 1 x 20-point BMS controller with onboard web server for the graphical representation of instantaneous and historical data
- ✓ SD card reader for historical data capture
- ✓ 6 x Split core CT's (0-150amp)
- ✓ 1 x 19.5" LCD Widescreen Monitor with wall mount bracket
- ✓ 1 x 16G Android Dual core media hub with HDMI output
- ✓ Pre-installed software to allow for plug-and-play functionality
- ✓ Ability to high-level interface with third party devices (power meters, variable speed drives etc) via several open protocols with no additional driver costs (Modbus RS485, Modbus IP, BACnet IP, BACnet MSTP)
- ✓ Ability to control and monitor at low level any physical device or condition
- ✓ Ability to e-mail alarms once connected to a network
- ✓ Smartphone friendly
- ✓ Fully expandable and adaptable to suit any size or type of installation

Bonlec is an independent, privately owned company operating in North Queensland since 1984